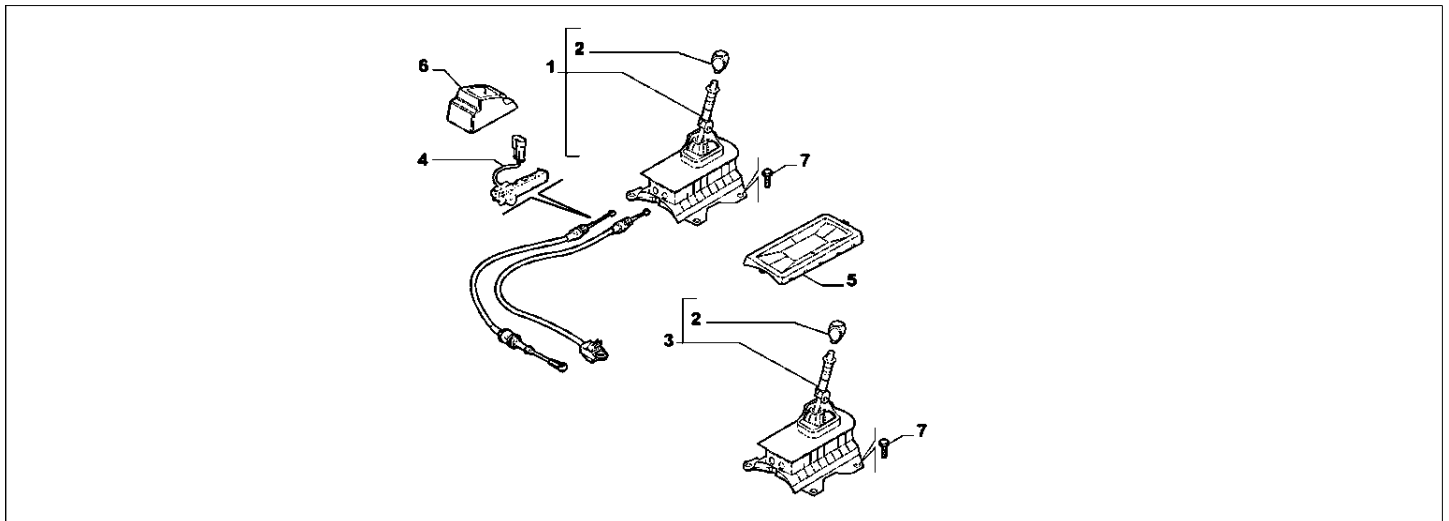


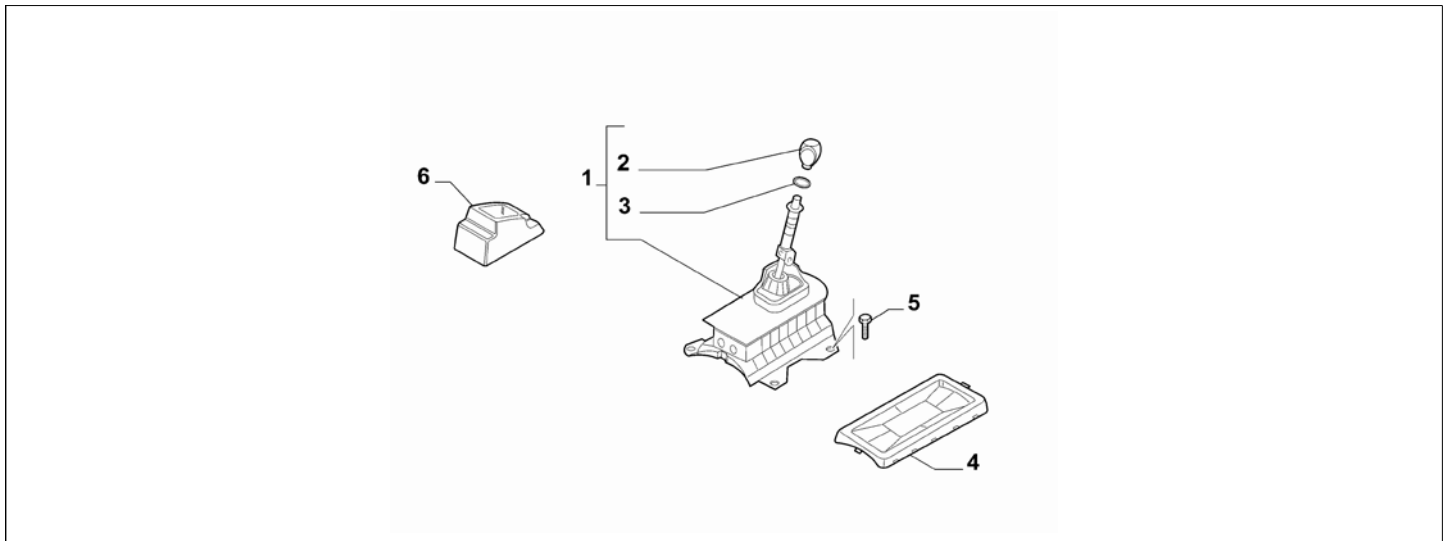
Catalogue	MITO 2011-2013	
Category	7.6 TRANSMISSION OUTER CONTROLS	
Var.	01	PCC510 + S/S
Rev.	00	



Part Num.	Description	Compatibility	Modif.	Qty	Notes	Col.	Reman.
1	46313350	CONTROL	1.4+I320+S/S	C16040	1		
1	46314122	CONTROL	1.4+I320	D16040, C16052	1		
1	46313356	CONTROL	1.4+320+S/S	C16040	1		
1	46314126	CONTROL	1.4+320	D16040, C16052	1		
1	46313352	CONTROL	1.3D+I320	C16040	1		
1	46314124	CONTROL	1.3D+I320	D16040, C16052	1		
1	46313361	CONTROL	1.3D+320	C16040	1		
1	46314129	CONTROL	1.3D+320	D16040, C16052	1		
2	55345664	KNOB	1.4+I320+S/S		1		
2	55345467	KNOB	1.4+320+S/S		1		
2	55345664	KNOB	1.3D+I320		1		
2	55345467	KNOB	1.3D+320		1		
3	46314121	CONTROL	1.4+I320	D16052	1		
3	46314121	CONTROL	1.3D+I320	D16052	1		
3	46315800	CONTROL	1.4+320	D16052	1		
3	46315800	CONTROL	1.3D+320	D16052	1		
4	55256125	SENSOR			1		
5	55199360	PROTECTION	1.4+I320		1		
5	55199360	PROTECTION	1.4+320		1		
5	55199360	PROTECTION	1.3D+I320		1		
5	55199360	PROTECTION	1.3D+320		1		
6	55221907	BOOT			1		
7	55200687	SCREW			4		

Legend	
320	LEATHER STEERING WHEEL AND GEAR LEVER KNOB
S/S	STOP&START
1.3D	HORSE POWER (MARKET):1.3
1.4	HORSE POWER (MARKET):1370
PCC510	GEARBOX DESIGN:GEARBOX
16040	New gearbox assemblies for maneuverability improvement [DAT 14/09/2012 (PCC514) , DAT 29/09/2011 (PCC510) ]
16052	Controls without engagement and selection cables [DAT 01/06/2012]

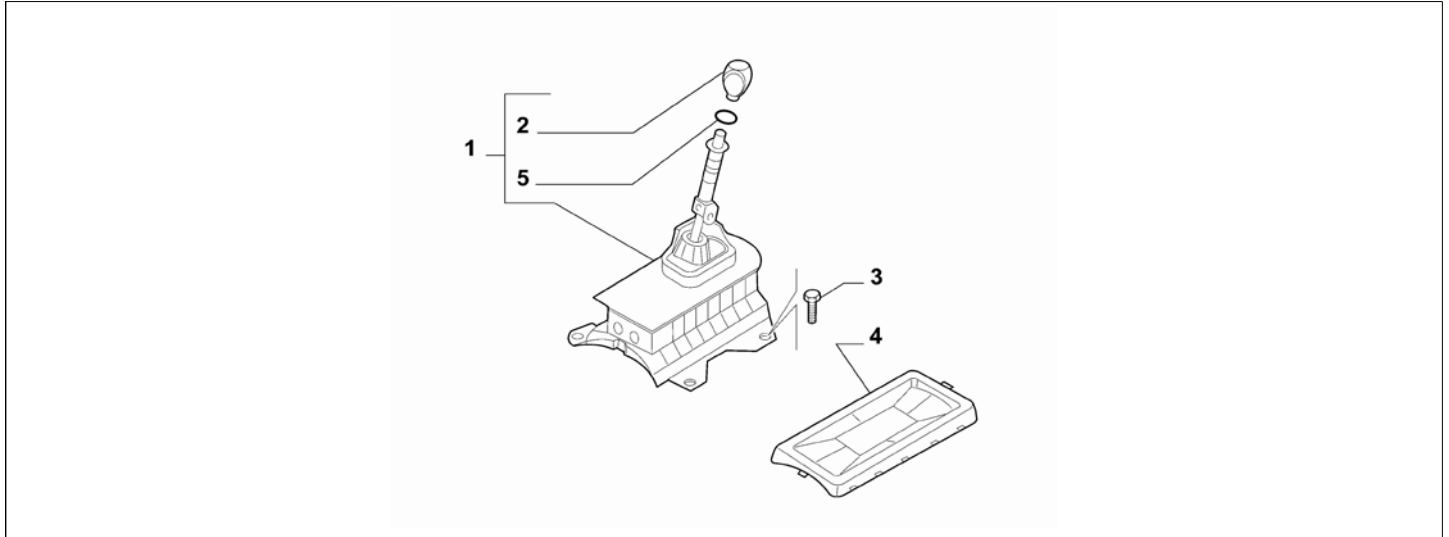
Catalogue	MITO 2011-2013	
Category	7.6 TRANSMISSION OUTER CONTROLS	
Var.	02	PCC510 + IS/S
Rev.	00	



Part Num.	Description	Compatibility	Modif.	Qty	Notes	Col.	Reman.
1	55345663	CONTROL	!320	C16040	1		
1	46314121	CONTROL	!320	D16040	1		
1	55345666	CONTROL	320	C16040	1		
1	46315800	CONTROL	320	D16040	1		
2	55345664	KNOB	!320		1		
2	55345467	KNOB	320		1		
3	55200840	RING	!320		1		
3	55200840	RING	320		1		
4	55199360	PROTECTION	!320		1		
4	55199360	PROTECTION	320		1		
5	55200687	SCREW			4		
6	55221907	BOOT			1		

Legend	
320	LEATHER STEERING WHEEL AND GEAR LEVER KNOB
S/S	STOP&START
PCC510	GEARBOX DESIGN:GEARBOX
16040	New gearbox assemblies for maneuverability improvement [DAT 14/09/2012 (PCC514) , DAT 29/09/2011 (PCC510) ]

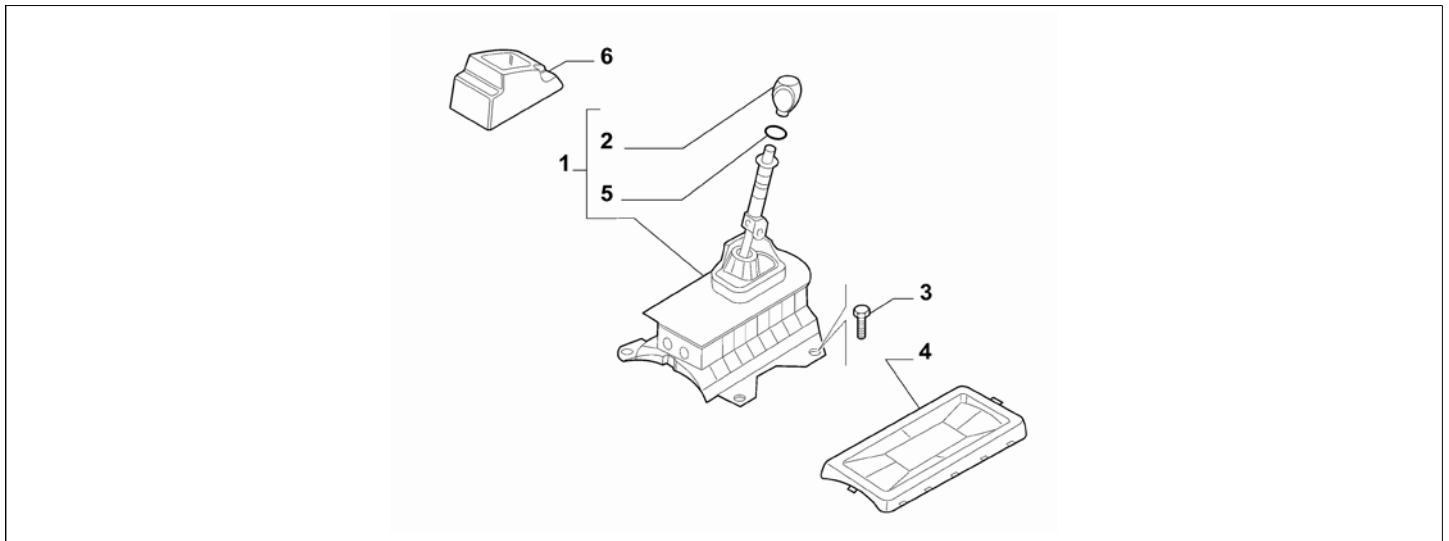
Catalogue	MITO 2011-2013	
Category	7.6 TRANSMISSION OUTER CONTROLS	
Var.	03	PCC514
Rev.	00	



Part Num.	Description	Compatibility	Modif.	Qty	Notes	Col.	Reman.
1	46313892	CONTROL		1			
1	55346811	CONTROL	16V+S/S+I320	1	C16040		
1	46315085	CONTROL	16V+S/S+I320	1	D16040		
1	46313438	CONTROL	1.4+8V+S/S	1	C16040		
1	46315089	CONTROL	1.4+8V+S/S	1	D16040		
1	46313438	CONTROL	1.4+8V+IS/S	1	C16040		
1	46315089	CONTROL	1.4+8V+IS/S	1	D16040		
2	55344845	KNOB	875CC	1			
2	55344845	KNOB	16V+S/S+I320	1			
2	46313437	KNOB	1.4+8V+S/S	1			
2	46313437	KNOB	1.4+8V+IS/S	1			
3	55200687	SCREW		4			
4	55199360	PROTECTION	875CC	1			
4	55199360	PROTECTION	16V+I320+IS/S	1			
4	55199360	PROTECTION	320	1			
4	55199360	PROTECTION	16V+S/S	1			
4	55199360	PROTECTION	1.4+8V+S/S	1			
4	55199360	PROTECTION	8V+IS/S	1			
5	55200840	RING	875CC	1			
5	55200840	RING	16V+I320+IS/S	1			
5	55200840	RING	320	1			
5	55200840	RING	16V+S/S	1			
5	55200840	RING	1.4+8V+S/S	1			
5	55200840	RING	8V+IS/S	1			

Legend	
320	LEATHER STEERING WHEEL AND GEAR LEVER KNOB
S/S	STOP&START
875CC	HORSE POWER (MARKET):875
1.4	HORSE POWER (MARKET):1370
PCC514	GEARBOX DESIGN:GEARBOX
16V	TOTAL NUMBER OF VALVES:16 VALVES
8V	TOTAL NUMBER OF VALVES:8 VALVES
16040	New gearbox assemblies for maneuverability improvement [DAT 14/09/2012 (PCC514) , DAT 29/09/2011 (PCC510) ]

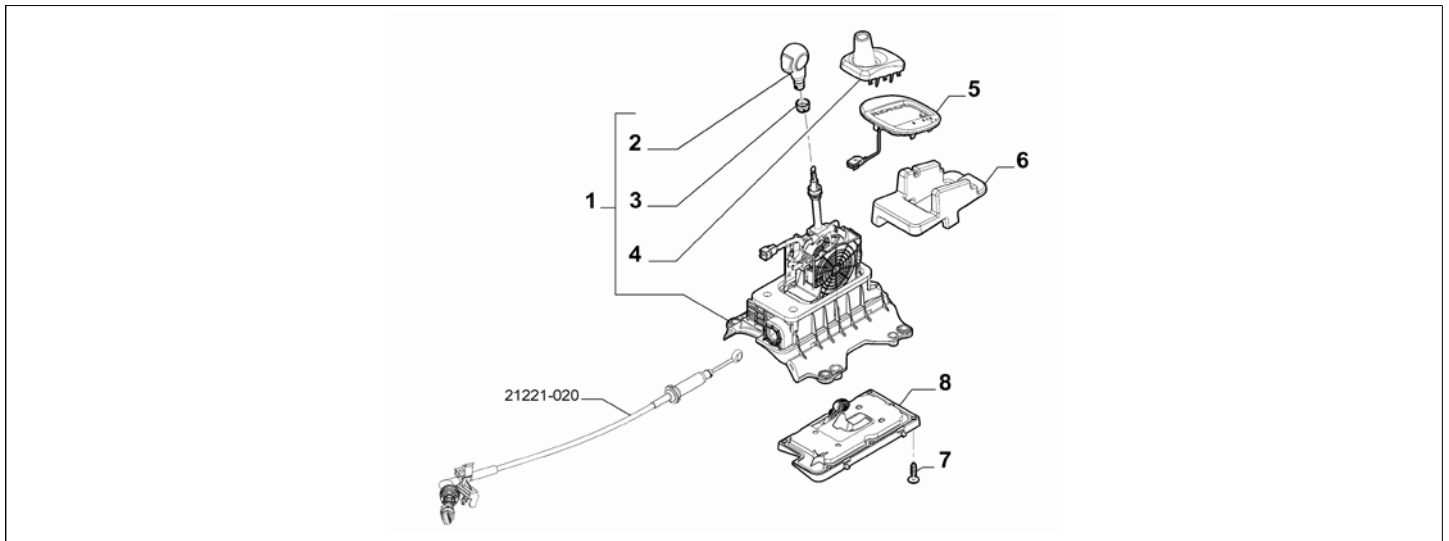
Catalogue	MITO 2011-2013	
Category	7.6 TRANSMISSION OUTER CONTROLS	
Var.	04	PCC635 + !TCT
Rev.	00	



Part Num.	Description	Compatibility	Modif.	Qty	Notes	Col.	Reman.
1	55346204	CONTROL	!320	1			
1	55346213	CONTROL	!TCT+320	1			
2	55344842	KNOB	!320	1			
2	55344848	KNOB	!TCT+320	1			
3	55200687	SCREW		4			
4	55199360	PROTECTION	!320	1			
4	55199360	PROTECTION	!TCT+320	1			
5	55200840	RING	!320	1			
5	55200840	RING	!TCT+320	1			
6	55221907	BOOT		1			

Legend	
TCT	SPECIFIC GEARBOX
320	LEATHER STEERING WHEEL AND GEAR LEVER KNOB
PCC635	GEARBOX DESIGN:GEARBOX 35 KGM

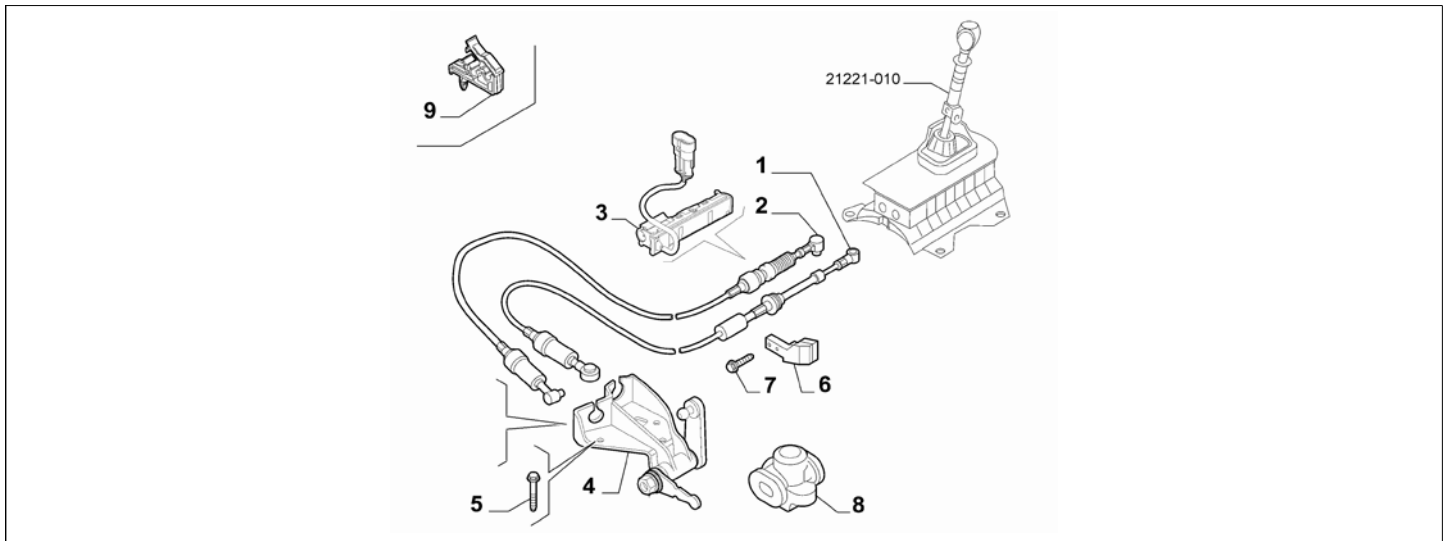
Catalogue	MITO 2011-2013	
Category	7.6 TRANSMISSION OUTER CONTROLS	
Var.	05	PCC635 + TCT
Rev.	00	



Part Num.	Description	Compatibility	Modif.	Qty	Notes	Col.	Reman.
1	46313394 CONTROL			1			
2	55346796 KNOB			1			
3	55346862 RING			1			
4	55346906 BOOT			1			
5	46313890 ORNAMENT	LHD		1			
5	55346386 ORNAMENT	RHD		1			
6	55227045 BOOT			1			
7	46811325 SCREW			7			
8	55230166 COVER			1			

Legend	
TCT	SPECIFIC GEARBOX
RHD	STEERING:RIGHT
LHD	STEERING:LEFT
PCC635	GEARBOX DESIGN:GEARBOX 35 KGM

Catalogue	MITO 2011-2013	
Category	7.6 TRANSMISSION OUTER CONTROLS	
Var.	01	PCC510
Rev.	00	

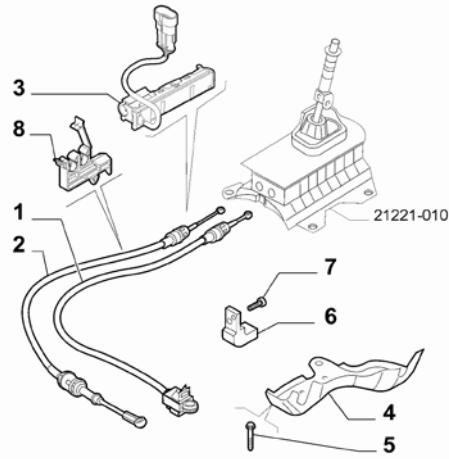


Part Num.	Description	Compatibility	Modif.	Qty	Notes	Col.	Reman.
1	55230828	BOWDEN ASSY., SELEZIONE	1.4+I320+IS/S	C16040	1		
1	55242880	BOWDEN ASSY., SELEZIONE	1.4+I320+IS/S	D16040, C16148	1		
1	55250326	BOWDEN ASSY., SELEZIONE	1.4+I320+IS/S	D16148	1		
1	55230828	BOWDEN ASSY., SELEZIONE	1.4+320+IS/S	C16040	1		
1	55242880	BOWDEN ASSY., SELEZIONE	1.4+320+IS/S	D16040, C16148	1		
1	55250326	BOWDEN ASSY., SELEZIONE	1.4+320+IS/S	D16148	1		
1	55230828	BOWDEN ASSY., SELEZIONE	1.4+I320+S/S	C16040	1		
1	55242880	BOWDEN ASSY., SELEZIONE	1.4+I320+S/S	D16040, C16148	1		
1	55250326	BOWDEN ASSY., SELEZIONE	1.4+I320+S/S	D16148	1		
1	55230828	BOWDEN ASSY., SELEZIONE	1.4+320+S/S	C16040	1		
1	55242880	BOWDEN ASSY., SELEZIONE	1.4+320+S/S	D16040, C16148	1		
1	55250326	BOWDEN ASSY., SELEZIONE	1.4+320+S/S	D16148	1		
1	55230717	BOWDEN ASSY., SELEZIONE	1.3D+I320	C16040	1		
1	55242879	BOWDEN ASSY., SELEZIONE	1.3D+I320	D16040, C16148	1		
1	55250328	BOWDEN ASSY., SELEZIONE	1.3D+I320	D16148	1		
1	55230717	BOWDEN ASSY., SELEZIONE	1.3D+320	C16040	1		
1	55242879	BOWDEN ASSY., SELEZIONE	1.3D+320	D16040, C16148	1		
1	55250328	BOWDEN ASSY., SELEZIONE	1.3D+320	D16148	1		
2	55230829	BOWDEN ASSY., INNESTO	1.4+I320+IS/S	C16040	1		
2	55242877	BOWDEN ASSY., INNESTO	1.4+I320+IS/S	D16040, C16148	1		
2	55250469	BOWDEN ASSY., INNESTO	1.4+I320+IS/S	D16148	1		
2	55230829	BOWDEN ASSY., INNESTO	1.4+320+IS/S	C16040	1		
2	55242877	BOWDEN ASSY., INNESTO	1.4+320+IS/S	D16040, C16148	1		
2	55250469	BOWDEN ASSY., INNESTO	1.4+320+IS/S	D16148	1		
2	55231154	BOWDEN ASSY., INNESTO	1.4+I320+S/S	C16040	1		
2	55242878	BOWDEN ASSY., INNESTO	1.4+I320+S/S	D16040, C16148	1		
2	55251271	BOWDEN ASSY., INNESTO	1.4+I320+S/S	D16148	1		

2	55231154	BOWDEN ASSY., INNESTO	1.4+320+S/S	C16040	1			
2	55242878	BOWDEN ASSY., INNESTO	1.4+320+S/S	D16040, C16148	1			
2	55251271	BOWDEN ASSY., INNESTO	1.4+320+S/S	D16148	1			
2	55231155	BOWDEN ASSY., INNESTO	1.3D+I320	C16040	1			
2	55242876	BOWDEN ASSY., INNESTO	1.3D+I320	D16040, C16148	1			
2	55251271	BOWDEN ASSY., INNESTO	1.3D+I320	D16148	1			
2	55231155	BOWDEN ASSY., INNESTO	1.3D+320	C16040	1			
2	55242876	BOWDEN ASSY., INNESTO	1.3D+320	D16040, C16148	1			
2	55251271	BOWDEN ASSY., INNESTO	1.3D+320	D16148	1			
3	55256125	SENSOR	S/S		1			
4	51869691	SUPPORT	PCC510		1			
5	16297924	SCREW, M8X18	PCC510		3			
6	46749869	DAMPER	PCC510		1			
7	46429284	SCREW	PCC510		2			
8	55254340	BOOT	PCC510		1			
9	46519177	CLIP	1.4		1			
9	55187370	CLIP	1.3D		1			

Legend	
320	LEATHER STEERING WHEEL AND GEAR LEVER KNOB
S/S	STOP&START
1.3D	HORSE POWER (MARKET):1.3
1.4	HORSE POWER (MARKET):1370
PCC510	GEARBOX DESIGN:GEARBOX
16040	New gearbox assemblies for maneuverability improvement [DAT 14/09/2012 (PCC514) , DAT 29/09/2011 (PCC510) ]
16148	Restoring of anti-trill cables replacing standard cables [DAT 25/09/2012]

Catalogue	MITO 2011-2013	
Category	7.6 TRANSMISSION OUTER CONTROLS	
Var.	02	PCC514
Rev.	00	



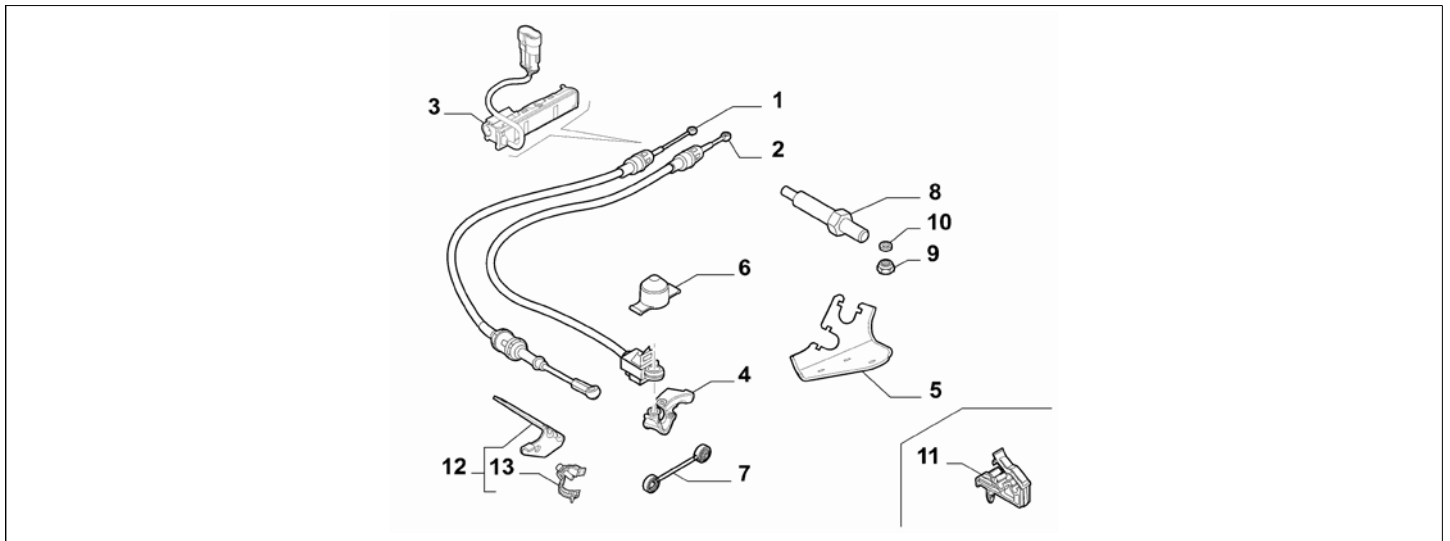
Part Num.	Description	Compatibility	Modif.	Qty	Notes	Col.	Reman.
1	55230720	BOWDEN ASSY., SELEZIONE	1.4+8V+I320+IS/S	C16040	1		
1	55246426	BOWDEN ASSY., SELEZIONE	1.4+8V+I320+IS/S	D16040, C16148	1		
1	55250323	BOWDEN ASSY., SELEZIONE	1.4+8V+I320+IS/S	D16148	1		
1	55230720	BOWDEN ASSY., SELEZIONE	1.4+8V+I320+S/S	C16040	1		
1	55246426	BOWDEN ASSY., SELEZIONE	1.4+8V+I320+S/S	D16040, C16148	1		
1	55250323	BOWDEN ASSY., SELEZIONE	1.4+8V+I320+S/S	D16148	1		
1	55230720	BOWDEN ASSY., SELEZIONE	16V+I320+S/S	C16040	1		
1	55246426	BOWDEN ASSY., SELEZIONE	16V+I320+S/S	D16040, C16148	1		
1	55250323	BOWDEN ASSY., SELEZIONE	16V+I320+S/S	D16148	1		
1	55240877	BOWDEN ASSY., SELEZIONE	875CC	C16258	1		
1	55249753	BOWDEN ASSY., SELEZIONE	875CC	D16258	1		
2	55230721	BOWDEN ASSY., INNESTO	1.4+8V+I320+IS/S	C16040	1		
2	55246427	BOWDEN ASSY., INNESTO	1.4+8V+I320+IS/S	D16040, C16148	1		
2	55250324	BOWDEN ASSY., INNESTO	1.4+8V+I320+IS/S	D16148	1		
2	55231153	BOWDEN ASSY., INNESTO	1.4+8V+I320+S/S	C16040	1		
2	55246425	BOWDEN ASSY., INNESTO	1.4+8V+I320+S/S	D16040, C16148	1		
2	46337937	BOWDEN ASSY., INNESTO	1.4+8V+I320+S/S	D16148	1		
2	55231153	BOWDEN ASSY., INNESTO	16V+I320+S/S	C16040	1		
2	55246425	BOWDEN ASSY., INNESTO	16V+I320+S/S	D16040, C16148	1		
2	46337937	BOWDEN ASSY., INNESTO	16V+I320+S/S	D16148	1		
2	55240876	BOWDEN ASSY., INNESTO	875CC	C16258	1		
2	55247725	BOWDEN ASSY., INNESTO	875CC	D16258	1		
3	55256125	SENSOR	S/S		1		
4	55183149	SUPPORT	1.4		1		
4	55222469	SUPPORT	875CC		1		
5	16297924	SCREW, M8X18	1.4		3		
6	46435681	DAMPER	PCC514		1		
6	55194934	DAMPER	875CC		1		
7	7789128	NUT, M8	PCC514		1		



8	55187370	CLIP	PCC514		1		
8	55240897	CLIP	875CC		1		

Legend	
320	LEATHER STEERING WHEEL AND GEAR LEVER KNOB
S/S	STOP&START
875CC	HORSE POWER (MARKET):875
1.4	HORSE POWER (MARKET):1370
PCC514	GEARBOX DESIGN:GEARBOX
16V	TOTAL NUMBER OF VALVES:16 VALVES
8V	TOTAL NUMBER OF VALVES:8 VALVES
16040	New gearbox assemblies for maneuverability improvement [DAT 14/09/2012 (PCC514) , DAT 29/09/2011 (PCC510) ]
16148	Restoring of anti-trill cables replacing standard cables [DAT 25/09/2012]
16258	Anti-ringing cables [DAT 25/07/2012]

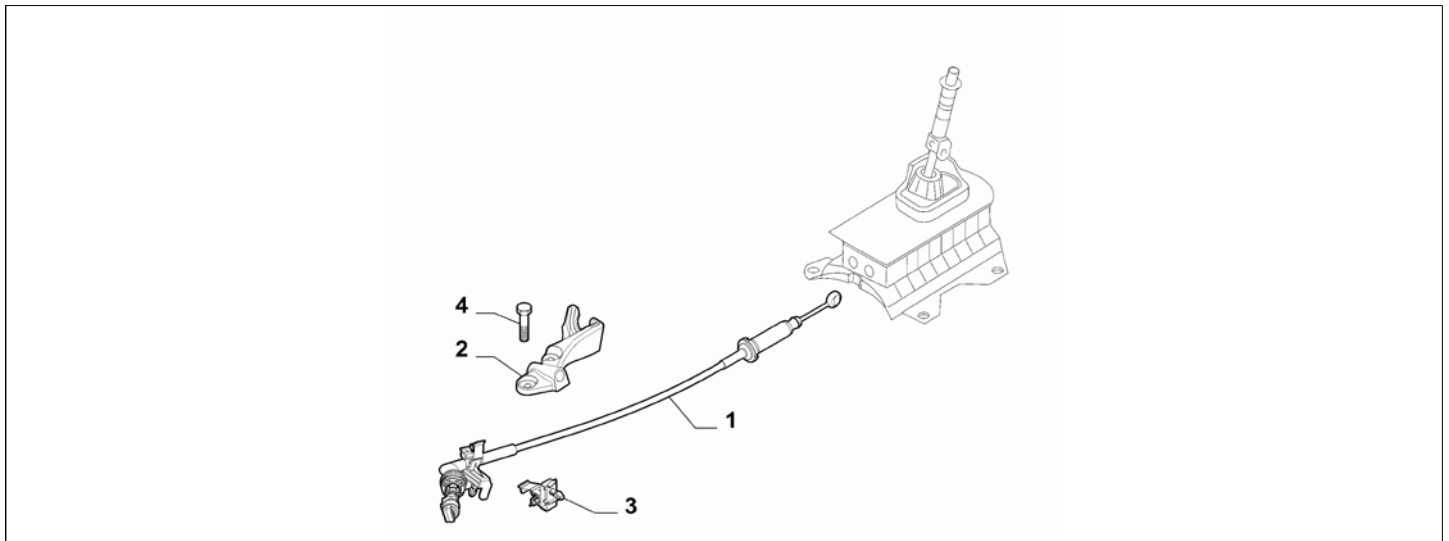
Catalogue	MITO 2011-2013	
Category	7.6 TRANSMISSION OUTER CONTROLS	
Var.	03	PCC635 + ITCT
Rev.	00	



Part Num.	Description	Compatibility	Modif.	Qty	Notes	Col.	Reman.
1	55235450 BOWDEN ASSY., INNESTO	1320		1			
1	55235450 BOWDEN ASSY., INNESTO	320		1			
2	55235449 BOWDEN ASSY., SELEZIONE	1320		1			
2	55235449 BOWDEN ASSY., SELEZIONE	320		1			
3	55256125 SENSOR			1			
4	55224366 LEVER			1			
5	55225179 SUPPORT			1			
6	55219198 BOOT			1			
7	55231114 ROD			1			
8	1335266080 PIN			1			
9	16104111 NUT, M8			1			
10	12647101 PLANE WASHER			1			
11	46519177 CLIP			1			
12	55233285 BRACKET			1			
13	60656528 CLIP			2			

Legend	
TCT	SPECIFIC GEARBOX
320	LEATHER STEERING WHEEL AND GEAR LEVER KNOB
PCC635	GEARBOX DESIGN:GEARBOX 35 KGM

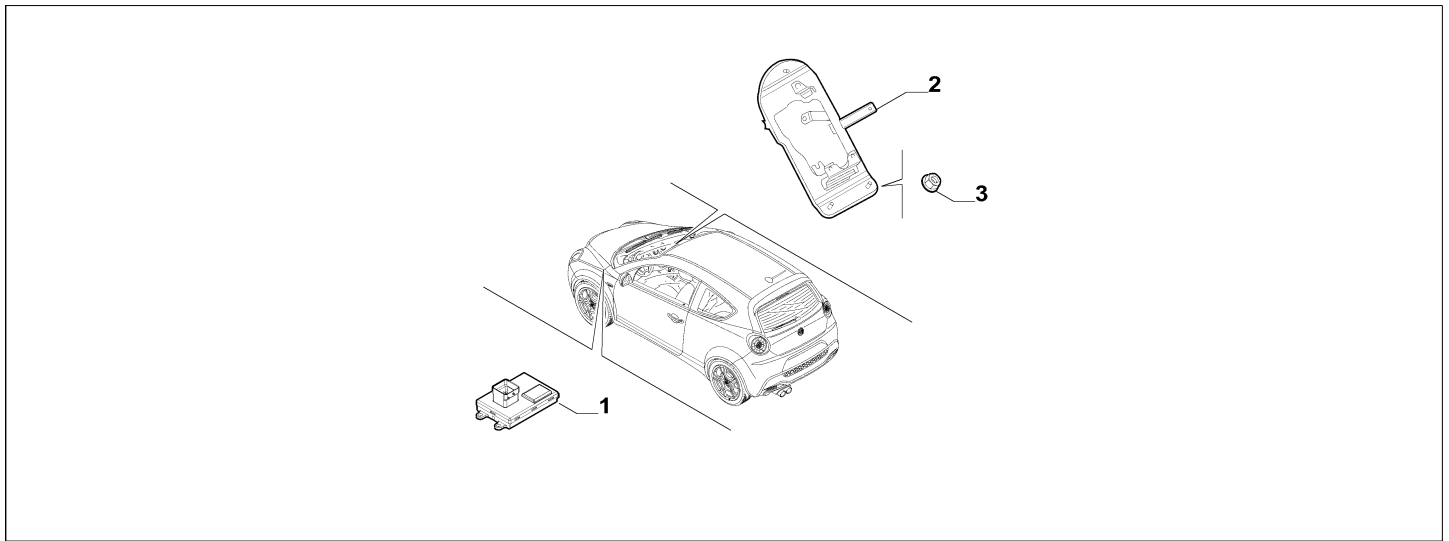
Catalogue	MITO 2011-2013	
Category	7.6 TRANSMISSION OUTER CONTROLS	
Var.	04	PCC635 + TCT
Rev.	00	



Part Num.	Description	Compatibility	Modif.	Qty	Notes	Col.	Reman.
1	55230167 BOWDEN ASSY.			1			
2	55231478 SUPPORT			1			
3	55230069 CLIP			1			
4	16297924 SCREW, M8X18			2			

Legend	
TCT	SPECIFIC GEARBOX
PCC635	GEARBOX DESIGN:GEARBOX 35 KGM

Catalogue	MITO 2011-2013	
Category	7.6 TRANSMISSION OUTER CONTROLS	
Var.	01	TCT
Rev.	00	



Part Num.	Description	Compatibility	Modif.	Qty	Notes	Col.	Reman.
1	55227326 CONTROL UNIT			1			
2	50519486 BRACKET	LHD+TCT		1			
2	50519487 BRACKET	RHD+TCT		1			
3	14084711 NUT, M6	TCT		3			

Legend	
TCT	SPECIFIC GEARBOX
RHD	STEERING:RIGHT
LHD	STEERING:LEFT