

# MiTo Tailgate Release Guide

A failed boot release mechanism on the MiTo *could* be an issue with the wiring loom to the boot itself, but if this is the case it is likely that the rear wiper will fail or fail sporadically. So if your *only* issue is the boot release badge (but your rear wiper is working fine) then it is likely a failed boot release mechanism.

There are three types of boot mechanism with different part numbers as they changed over the years, though all will work in any MiTo. Type 1 (50517345) is the original Alfa Romeo logo unit (fitted to my 2012 model here) and incorporates a wiring connector. Type 2 (50531454) is also the original Alfa Romeo logo but the connector is built into the unit (but still connects to the MiTo wiring). Type 3 (50538700) is the same unit as the Type 2 with the important difference that it is the new (2016 on) Alfa Romeo logo.

Type 1 with wiring attached to the mechanism, part # 50517345



Type 2/3 with direct connection, part # 50531454 (original logo) or 50538700 (new logo)



## Step 1: Remove tailgate trim

The tailgate trim is held on with ten plastic clips highlighted in red. Gently pull each clip off with either a trim removal tool or a flat knife. Once all the clips are removed, the trim has to be lifted UP the tailgate window as there are two clips which slide down onto the metal of the tailgate. This is important to remember when you re-fit the tailgate trim later.

With the trim removed, you can see the back of the boot release.



## Step 2: Release wiring connector

If you have the older (type 1) mechanism with wiring attached, use your finger to pop out the wiring connect from the metal-work (see image, right).

## Step 3: Disconnect wiring

The MiTo wire to the boot release mechanism is the same whichever type your car has; it either slips into the wire from the mechanism (type 1) or directly into the back of the mechanism (types 2 and 3). Just push the small plastic clip (indicated in the picture below right) on the side of the connector to release the coupling.

## Step 4: Remove 10mm nuts

With a 10mm socket extension, remove both the nuts holding the boot release mechanism to the tailgate. Take care not to drop or lose them!

## Step 5: Remove mechanism

With the nuts removed, the mechanism simple comes away from the tailgate. Before replacing it, be sure to clean and polish your boot as you will be surprised at the amount of dirt that collects under the badge.



## Install New Mechanism

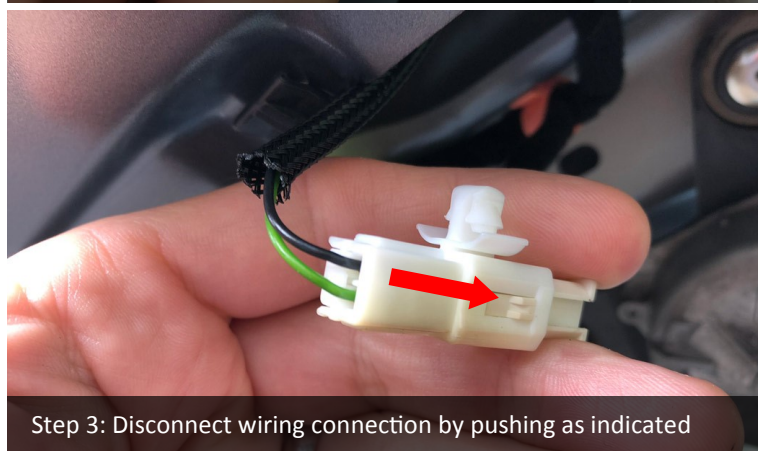
Installation is the reverse of removal. Be sure to check it works *before* replacing tailgate trim, and slide the tailgate trim DOWN the window to re-fit.



Step 1: Remove tailgate trim by gently easing off the ten clips



Step 2: Pop-out the wiring connector with your finger



Step 3: Disconnect wiring connection by pushing as indicated



Step 4: Remove both 10mm nuts to release the mechanism