

MiTo Glovebox Rattles

A common problem on the MiTo is that of a rattling glovebox. Is there anything more annoying than the constant rattle when you go over the slightest bump in the road?

Chances are, it could just be your top latch that needs adjusting to pull the glovebox lid tighter when closed. Over time, as the latch wears, it can cause the annoying rattle sound as the lid becomes more loose.

But the fix couldn't be simpler, all you need is a T25 torx bit.



Alfa MiTo Glovebox - rattling is common but (normally) easily fixed

Before you start, with the glovebox lid closed, poke it a few times with your finger to gauge the level of loose rattle. Then have this in mind when you are adjusting it.

If you open the glovebox, you will see the top latch in the centre which is held in with two torx screws. The latch itself is *designed* to be

adjustable; undo the torx screws slightly and you can slide the latch back and forth, angling the left or right back and forth.

The difficulty is that there is a lot of trial and error. The aim is to find the optimal location of the top latch such that when the glovebox is closed it is nice and tight. But fasten the latch *too* tight and the lid

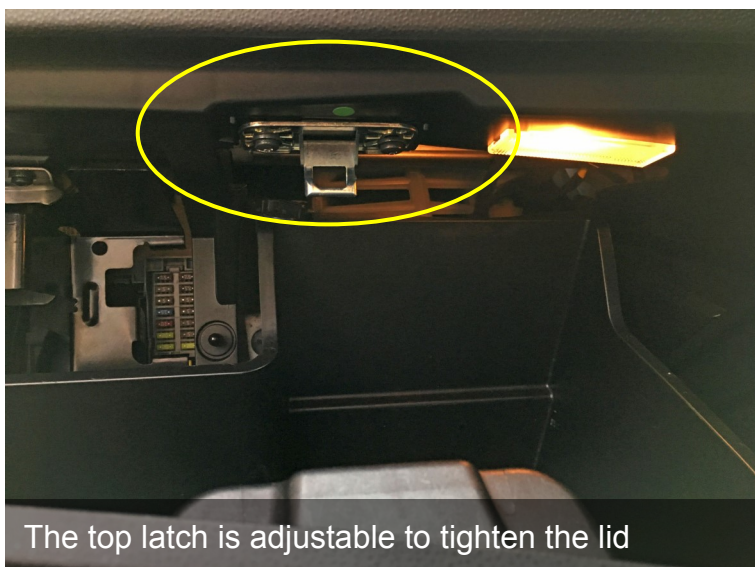
will be difficult to open and close.

So my suggestion is that you *very slightly* loosen the torx screws then adjust one side of the latch forward a millimetre or so and then tighten the screws again and try the glovebox lid.

Each time you make a small adjustment, close the lid and give it a good poke

with your finger to compare it against your starting point. Then you just keep trialling it until you're happy with the results.

Don't assume the optimal top latch position is nice and square though - my adjustment was a few millimetres on one side and only one millimetre on the other. So yours may seem random too!



The top latch is adjustable to tighten the lid



Adjust the top latch in tiny increments until you are happy with the level of tightness