

# MiTo Blue&Me Update Guide

Updating your Blue&Me software is broadly a four-step process: First you need to prepare a USB stick, secondly you need to get the configuration of your existing software so you can establish the latest version for your car, you then need to prepare the update on a USB stick, and finally you can apply the correct update of Blue&Me to your MiTo.

The process is *relatively* straightforward, but you must follow the installation process precisely or risk being exposed to software doom as there is no way of going back to your previous version!

But let's start with what you need. Fairly obviously, you must already have Blue&Me in your MiTo. Trying to follow this process to actually get Blue&Me isn't going to work. You also need a USB slot in your MiTo and, of course, a USB stick. This is recommended to be no greater than 256MB, though my tests with a 500MB USB worked fine (the smallest USB I had). And finally, you need either a PC or a Mac to access the Blue&Me website with a USB capability to load up your USB stick.

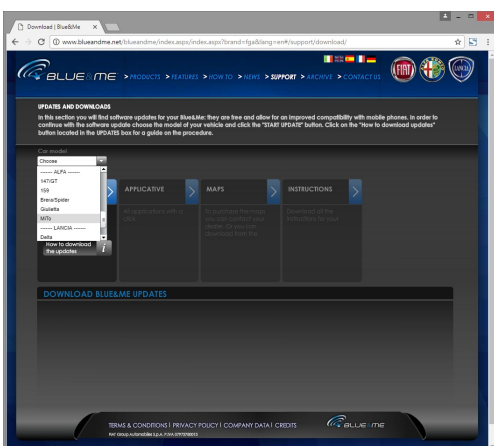
## Step 1 - Preparation

Insert your USB stick into your computer, which must be formatted in FAT32 format (see the end of this guide for help). If you are not re-formatting the USB stick, ensure you delete all files on the USB stick to ensure it is clean and ready to use.

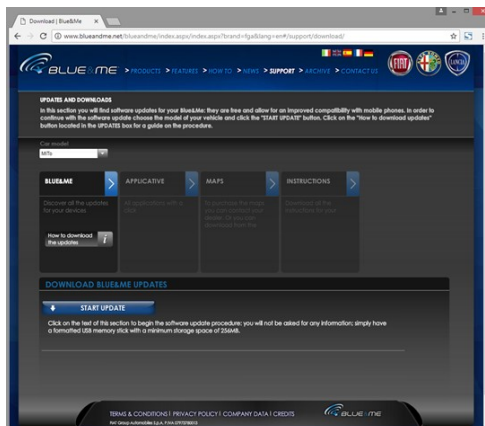
You now need to visit the Blue&Me download site here:

<http://www.blueandme.net/blueandme/index.aspx/index.aspx?brand=fga&lang=en#/support/download/>

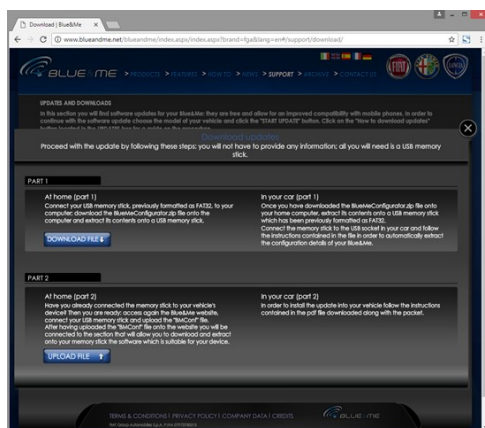
Click on the Car Model drop-down box and select MiTo like this screenshot:



Once you have selected MiTo, the START UPDATE button will appear.



Click the blue START UPDATE button and it will show the following screen:



Click the blue "DOWNLOAD FILE" button and it will download the file "BlueMeConfigurator.zip" to your Downloads directory. Leave this webpage up as you will need to come back to it shortly.

In your Downloads directory, find the "BlueMeConfigurator.zip" file and you will find the following files within it:

Name	Date modified	Type	Size
configuration	14/12/2015 15:53	File	1 KB
ConfReader_Lh.ARM926.CAB	10/07/2013 12:49	Cabinet File	50 KB
Talimatter_TR.pdf	08/07/2013 09:45	Adobe Acrobat D...	221 KB
Directing_PT.pdf	08/07/2013 09:45	Adobe Acrobat D...	170 KB
Instrukcje_PL.pdf	08/07/2013 09:45	Adobe Acrobat D...	223 KB
Instrukcje_FR.pdf	08/07/2013 09:44	Adobe Acrobat D...	144 KB
Instrukcje_EN.pdf	08/07/2013 09:44	Adobe Acrobat D...	135 KB
Anleitung_DE.pdf	08/07/2013 09:44	Adobe Acrobat D...	168 KB
Anleitung_IT.pdf	08/07/2013 09:43	Adobe Acrobat D...	143 KB
ConfReader_conv.ARM920.CAB	16/07/2012 10:05	Cabinet File	173 KB
install.inf	08/02/2012 11:47	Setup Information	23 KB

Ignoring the .pdf instruction files, copy all the other files onto your USB stick, so your stick contents look like this:

Name	Date modified	Type	Size
configuration	14/12/2015 15:53	File	1 KB
ConfReader_Lh.ARM926.CAB	10/07/2013 12:49	Cabinet File	50 KB
ConfReader_conv.ARM920.CAB	16/07/2012 10:05	Cabinet File	23 KB
install.inf	08/02/2012 11:47	Setup Information	1 KB

Now, before going on with the next step (which involves going to your MiTo), you MUST disconnect Bluetooth on any paired phones you have, or switch the phones off BEFORE you do the next step. Once your devices are off, you are now ready to take your USB to your MiTo.

## Step 2 - Retrieving your current Blue&Me configuration from your MiTo

Ensure you have either completely disabled Bluetooth on your mobile phone, or switched it off before doing this step.

Go to your MiTo with your USB stick and car keys.

Insert the USB stick into your USB socket, then turn on your ignition but do not start the engine.

You will see an "Update in Progress" message like this:



This is followed quickly by a "USB Update Complete" message.



You can now switch off your ignition and remove the USB stick and take it back to your computer.

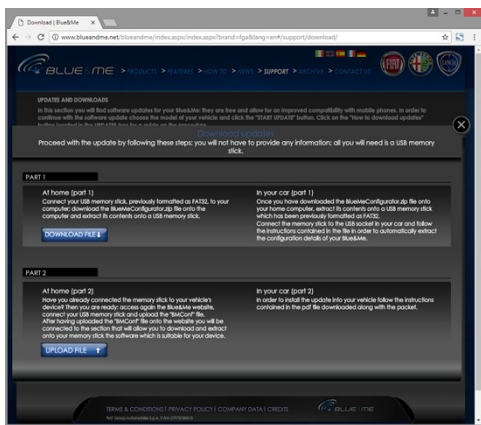
Note, nothing has actually been changed on your MiTo yet – this step simply downloads the configuration of your MiTo to the USB stick. As each car may have different configurations (e.g. some have a Nav, some have the detachable TomTom unit etc) and some may have had previous updates at a dealer during servicing, you cannot simply "update" your Blue&Me.

It must be updated to the *correct* latest version applicable to the configuration of your car.

# MiTo Blue&Me Update Guide

## Step 3 – Getting Ready for the Update

Go back to the webpage you were on and it should still look like this:



Click on the blue “UPLOAD FILE” and it will open a window for you to find a file to upload. Go to the contents of your USB stick which should look like this:

Name	Date modified	Type	Size
BMConf.xml	19/03/2018 10:46	XML Document	1 KB
configuration	14/12/2013 15:53	File	1 KB
ConfReader_Lh.ARM926.CAB	10/07/2013 12:49	Cabinet File	50 KB
ConfReader_conv.ARM920.CAB	16/07/2012 10:05	Cabinet File	23 KB
install.inf	08/02/2012 11:47	Setup Information	1 KB

Select the new file “BMConf.xml” and upload it to the website.

You should immediately see the re-freshed screen giving the new option to “Download v. X.X update”.

This will vary based on the existing configuration of your MiTo, so there will be different versions if you have the Nav or the TomTom etc, but it should look something like this:



Click the blue “Download v. X.X update” button and it will download the file name “Aggiornamento\_BlueMe\_.....(varies).zip” to your Downloads directory.

The “Aggiornamento... .zip” file will contain files similar, but not necessary identical, to these:

Name	Date modified	Type	Size
BMfN_L1_L4_TomTomLau_199_10210_F.ARM926.cab	11/02/2014 14:09	Cabinet File	592 KB
cfg_update_L191.inf	22/04/2009 21:24	Setup Information	1 KB
install.inf	23/07/2015 12:49	Setup Information	1 KB
Instructions - BlueMe_10.0_EN.pdf	01/10/2015 10:59	Adobe Acrobat D...	225 KB
L15E_001.ARM926.CAB	11/11/2015 15:02	Cabinet File	17 KB
L15E_001.ARM926.CAB	11/11/2015 15:02	Cabinet File	1,017 KB
Reflesh_S201.sec	05/11/2015 08:53	SEC File	24,846 KB
Reflesh_S201.cab.pks	04/11/2015 16:22	PKS File	4,013 KB
ssh0809_FIAT_LH.V1.ARM926.cab	20/02/2012 09:48	Cabinet File	6,959 KB
xipk.cab.pks	20/07/2015 10:49	PKS File	844 KB

Now delete all the contents from your USB stick, and copy all the contents of the “Aggiornamento... .zip” file to your USB stick.

Your USB stick now contains the Blue&Me updates, and you are now finished with the website and your computer. Though I recommend saving both your original config and update zip files somewhere safe on your computer.

## Step 4 – The Update

Go to your MiTo with your USB stick and car keys.

Insert the USB stick into your USB socket, then turn on your ignition but do not start the engine.

You will see “Update in Progress” for several minutes, then this may disappear. Do not do anything yet!



After a while, you should see the “Installation in Progress” message.



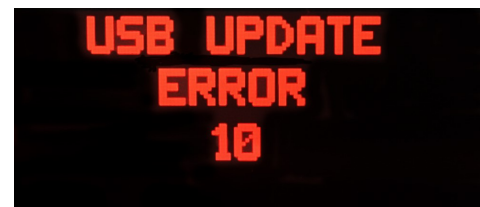
This may last a few more minutes until finally you will see the “USB Update Complete” message.

You can now switch off your ignition and remove the USB stick.

Now start your engine as normal and ensure everything is working okay.



If the update does not complete, you may see the following error (or similar):



And your MiTo will start speaking to you in Italian! Do not panic!

The update does take several minutes and at times the messages disappear, re-appear and disappear again. So you potentially switched off or removed the USB stick too soon (or something else went wrong).

Simply repeat the update process (Step 4) again, but wait until the update has fully completed which can take several minutes.

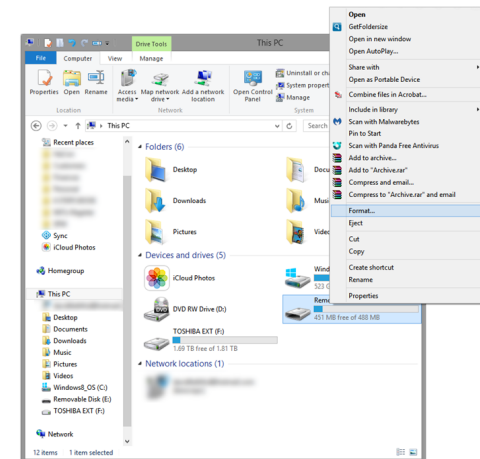
You will need to pair your phone again along with your TomTom if you have one.

## USB Stick Formatting in FAT32

To format a USB to FAT32, put the USB stick into your PC

From the Start window, click on This PC or This Computer and the USB stick should appear under Devices and Drives as “Removable Disk”.

Right click that Removable Disk and select “Format”. It will look similar to this:



Select FAT32 in the File System, enter BlueMe in “Volume Label” and click Start.